



GMT MONTHLY MEMBERSHIP PROGRESS REPORT

Results as of: 9/30/2019

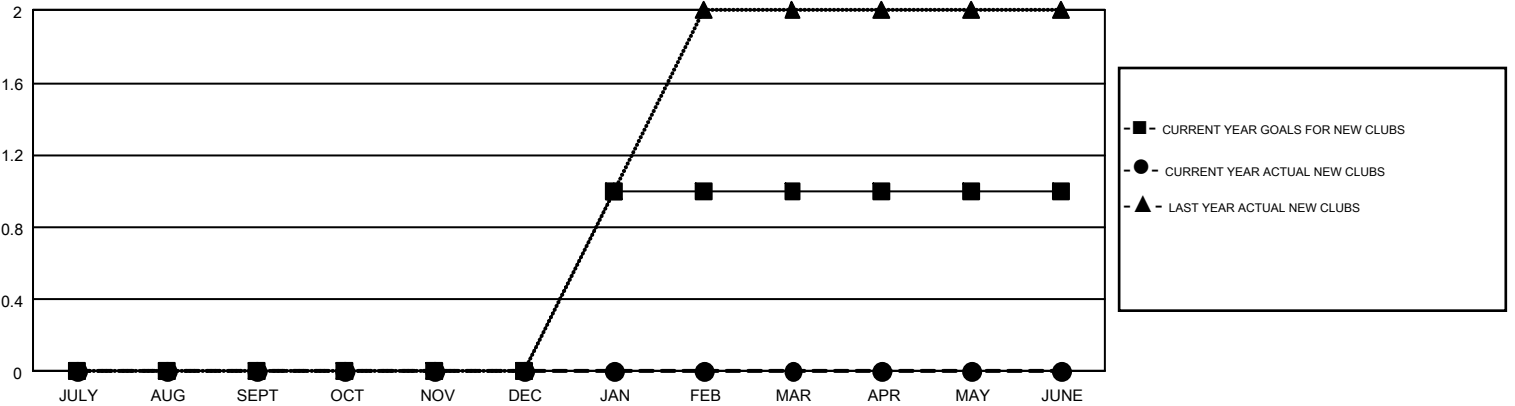
GMT Constitutional Area 3, Group I

GMT: OPEN

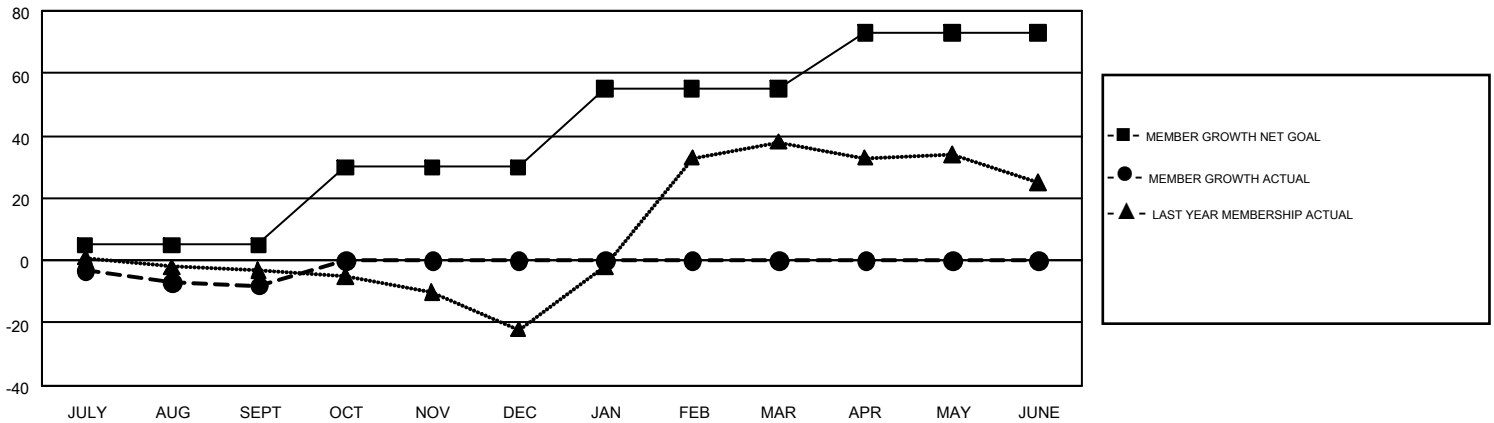
REPORT DOES NOT INCLUDE CLUBS IN UNDISTRICTED AREAS.

Clubs				Members			
RESULTS FOR 2019-2020				RESULTS FOR 2019-2020			
QUARTER	NEW CLUB GOAL	NEW CLUBS	DROPPED CLUBS	QUARTER	MEMBER GROWTH NET GOAL	MEMBER GROWTH ACTUAL	DROPPED MEMBERS ACTUAL (including transfers)
JULY/AUG/SEPT	0	0	0	JULY/AUG/SEPT	5	5	11
OCT/NOV/DEC	0	0	0	OCT/NOV/DEC	25	0	0
JAN/FEB/MAR	1	0	0	JAN/FEB/MAR	25	0	0
APR/MAY/JUNE	0	0	0	APR/MAY/JUNE	18	0	0

GOALS AND ACTUAL NEW CLUBS CUMULATIVE



GOALS AND ACTUAL MEMBERS CUMULATIVE



DROPPED CLUBS: 0	2 CLUBS OF 36 ADDED 1 OR MORE NEW MEMBERS	<u>GENDER DISTRIBUTION</u>	
<u>DROPPED MEMBERS</u>		MALE	314 (48.61%)
DECEASED	3	FEMALE	332 (51.39%)
CLUB CANCELLED	0	TOTAL FAMILY UNIT MEMBERS	
OTHER	8	FAMILY MEMBERS PAYING HALF DUES	
TOTAL	11	TOTAL FAMILY UNIT MEMBERS	
	CLICK HERE FOR CUMULATIVE MEMBERSHIP DATA	FAMILY MEMBERS PAYING HALF DUES	
		TOTAL FAMILY UNIT MEMBERS	
		FAMILY MEMBERS PAYING HALF DUES	